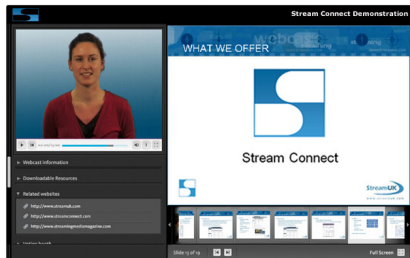


## Complete Webcasting Management

### Stream Connect Player



See the demo at: <http://screlease.streamuk.com>

#### Wizard based

- Seven step webcast creation
- Live or on-demand source
- Add multiple presenters
- Holding slides
- Interactive features

#### Administer over the internet

- Remote administration
- Encode on one machine
- Set-up scheduled webcasts
- Broadcast live events

#### Control your distribution

- RSS feeds
- Distribute to webpages, clients, internal groups, ...
- Standards compliant

#### Customise to your needs

- Consistent branding
- Bespoke players
- Integration with LDAP or LiveID

#### Complete reporting

- Live and on-demand
- Real-time reports
- Drill down to individual webcasts
- Can be integrated with third parties



## Stream Connect: Enterprise Level Webcasting

Is your webcasting as easy as  
it should be?

- Create a branded webcast within minutes
- Reduce editing and distribution time
- Leverage the advantages of Web 2.0 technology with RSS
- Uses XML throughout to integrate with existing systems



Phone: 020 7387 6090 | email: [connect@streamuk.com](mailto:connect@streamuk.com)

Stream UK Media Services Limited  
1 Water Lane | Camden | London

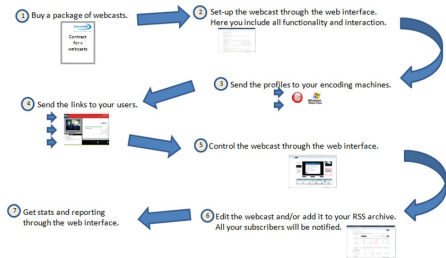
# A better way to communicate slides, applications, audio & video: Stream Connect



Stream UK has been the UK's leading independent provider of webcasting as a service since 2001.

The Stream Connect product removes complexity and the need for expert operators.

It builds on our enterprise level reliability which over 200 clients have come to expect, and applies our expertise to self-managed corporate webcasting.



Stream Connect is a product, but that does not mean one size fits all.

A part of this service is the integration when we work hand in hand with stakeholders within your company to ensure that the product is set-up to suit your workflow, security and procedures.

Templates play a key role in both the look and feel of the output and the workflow. Approval and security is set at a template level, so different use cases will each have individual templates.

LDAP integration is essential in avoiding unnecessary verification and ensuring security.

Online Portals can be customised for users, departments, division and external clients.

### Features include:

- Template driven approach, which helps you maintain a consistent look and feel across your organisation
- Reports interface, including a third-party plug-in for complete accountability
- Delivery of content in Windows Media, Silverlight or Flash - change as and when required
- Comprehensive help pages and reporting

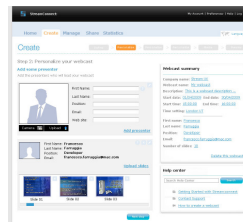
## Stream Connect: The next generation Video Management System

### Well received

“Stream UK Stream Connect is a simplified yet powerful interactive streaming platform that can be managed by the presenter through a series of seven steps.”

- Tim Siglin reviews the Stream Connect in the April 30th 2009 edition of Streaming Media: European Edition

### Wizard based



Create a webcast from either live or pre-recorded content by walking through our seven-step wizard.

You'll quickly set-up an attractive webcast including additional documents and interactivity.

Once set-up, press the start button and you are live. The on-demand version is automatically created immediately after the event.

- Core features:**
- Slide synchronisation
  - Attach documents
  - Add links
  - Webchat and polling

- Extra features:**
- Custom interactions
  - Bespoke player
  - Security

### Multiple format

Stream Connect integrates with your existing encoding software or hardware to allow you to broadcast in your chosen format.

Currently the tool is integrated with Flash, H264, Windows Media and Silverlight.

- Core features:**
- Windows Media
  - Flash
  - Silverlight

- Extra features:**
- Video Conference link-up
  - SIP Integration



### Comprehensive Reporting

ROI is key and you need to know who is watching.

Stream Connect allows you to view comprehensive stats on all webcasts and viewers.

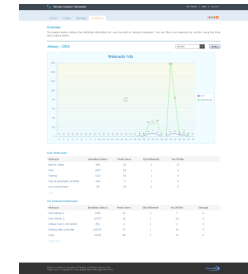
You'll see reports of who is watching in real-time and be able to drill down into individual webcasts.

**Core features:**

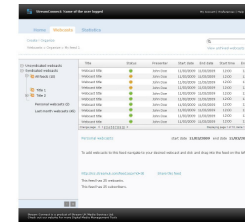
- Full reporting on live and on-demand webcasts
- Real-time statistics
- Intuitive graphs

**Extra features:**

- Integration with existing reporting systems



### Distribution lists



Webcasts can be ordered into folders and each folder has an associated RSS feed.

This makes it incredibly easy to distribute content to different groups (clients, departments or subscribers).

The RSS feed can be built into a web portal or subscribed to via an RSS reader.

**Core features:**

- RSS feeds for each folder
- Create and name a folder within the admin system
- Automatic content update based on date

**Extra features:**

- Secure feeds
- Bespoke data collection
- Integration with Active Directory

### Templates

Our stock library of templates should cater for just about every type of event. From an audio webinar with slides to a live webcast with audio, video, slides and Q&A.

All templates can be easily modified to accommodate your branding and corporate identity.

This keeps a consistent look and feel to each of your webcasts.

**Core features:**

- Comprehensive selection of templates
- Can be modified easily
- Templates affect function as well as the look and feel

**Extra features:**

- Assign templates based on the department

